

4

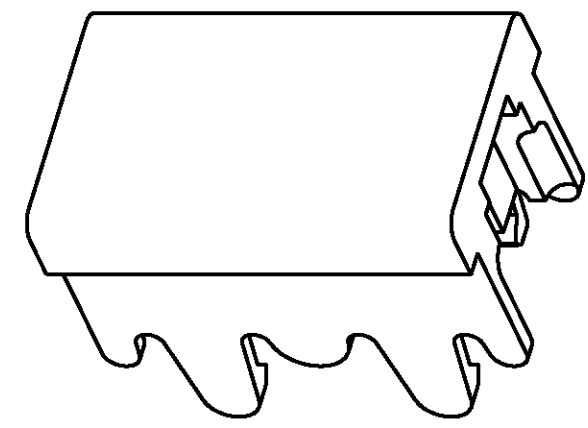
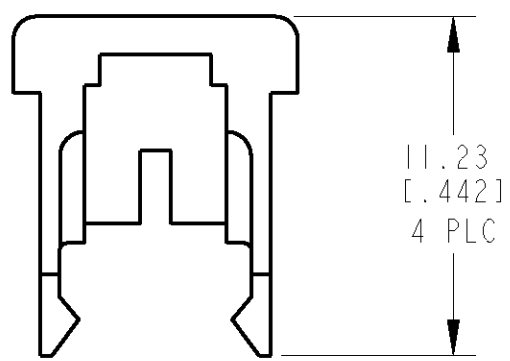
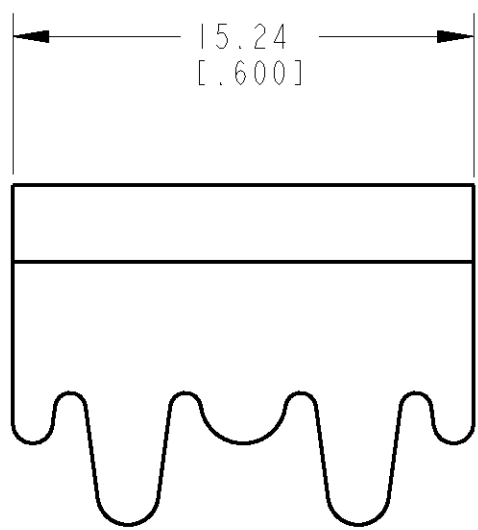
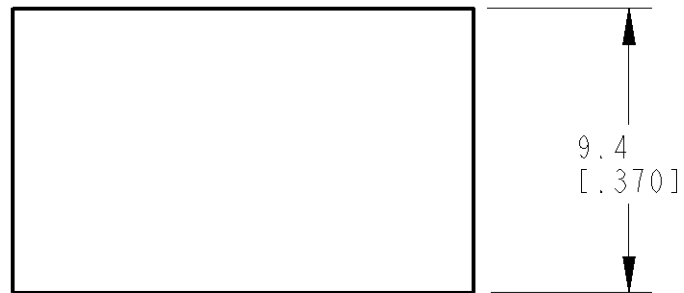
3

2

1

THIS DRAWING IS UNPUBLISHED. RELEASED FOR PUBLICATION .19 .
 © COPYRIGHT 19 BY AMP INCORPORATED. ALL RIGHTS RESERVED.

LOC	DIST	REVISIONS			
P	LTR	DESCRIPTION	DATE	DWN	APVD
AA	28	C	ADDED 1/1 PER NPR C97-013, EC 0502-0039-97	27JAN97	CW DW



- 1 MATERIAL: POLYPHENYLENE MOLDING COMPOUND, NEMA GRAY.
- 2 PACKAGED 50 LOOSE PIECES PER POLYBAG.
- 3 PACKAGED 2500 LOOSE PIECES PER POLYBAG.

3	1-569332-1
2	569332-1
PACKAGED	PART NO.

<small>THIS DRAWING IS A CONTROLLED DOCUMENT FOR AMP INCORPORATED. IT IS SUBJECT TO CHANGE AND THE CONTROLLING ENGINEERING ORGANIZATION SHOULD BE CONTACTED FOR THE LATEST REVISION.</small>		DWN C.WHITT 23JAN97 CHK C.WHITT 23JAN97 APVD D.WILLIS 23JAN97	AMP AMP Incorporated Harrisburg, PA 17105-3608	
DIMENSIONS: mm [INCHES]	TOLERANCES UNLESS OTHERWISE SPECIFIED: 0 PLC ±- 1 PLC ±- 2 PLC ±- 3 PLC ±0.13 [.005] 4 PLC ±- ANGLES ±-	PRODUCT SPEC - APPLICATION SPEC - WEIGHT -	NAME STUFFER CAP, 110CONNECT	
MATERIAL 1	FINISH -	SIZE A3 CAGE CODE 00779 DRAWING NO C-569332	RESTRICTED TO -	
CUSTOMER DRAWING		SCALE 4:1	SHEET 1 OF 1	REV C